

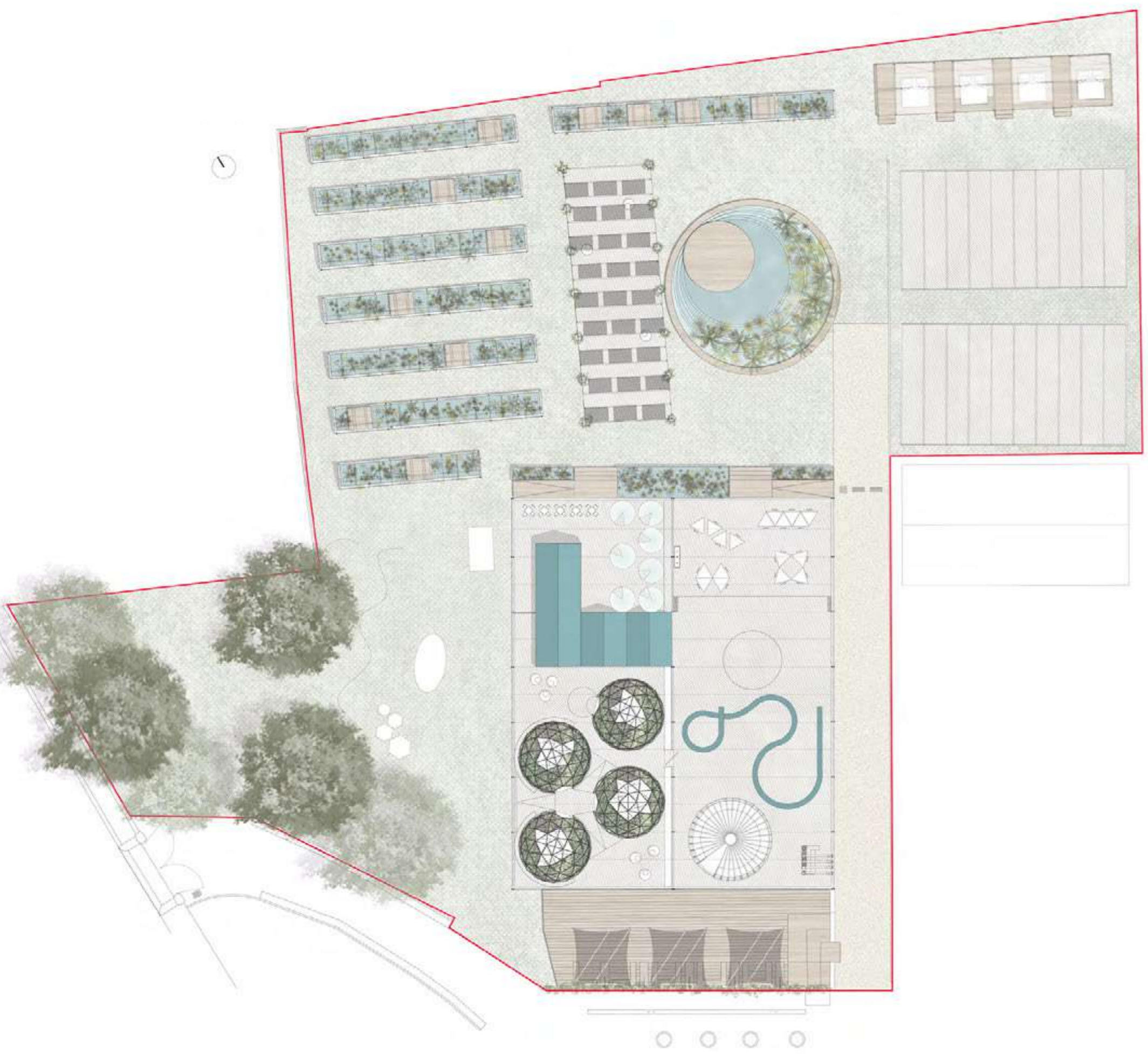


progetto

di rigenerazione

serra madre

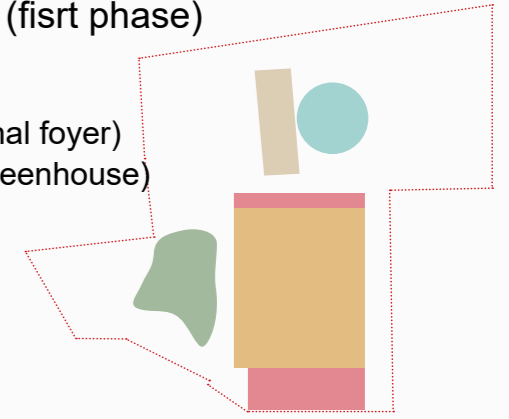
(Regeneration project of "Serra Madre")



area di intervento
(Intervention area)

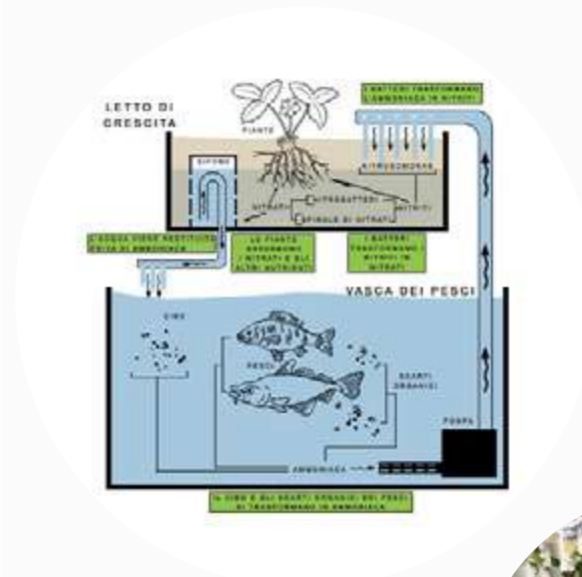
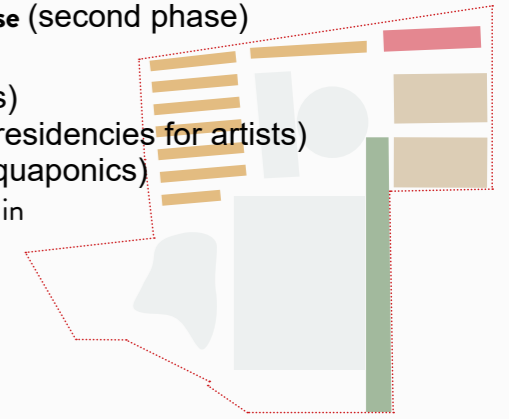
interventi prima fase (first phase)

- serra madre
- foyer esterno (external foyer)
- serra solare (solar greenhouse)
- playground
- biolago (bio-lake)



interventi seconda fase (second phase)

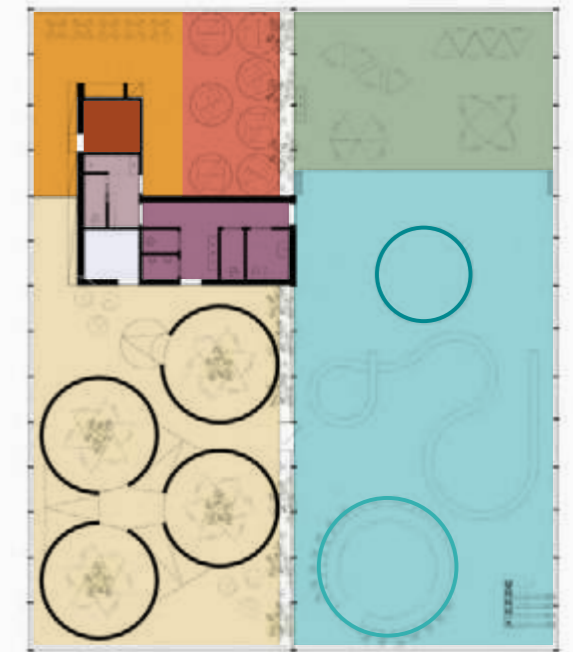
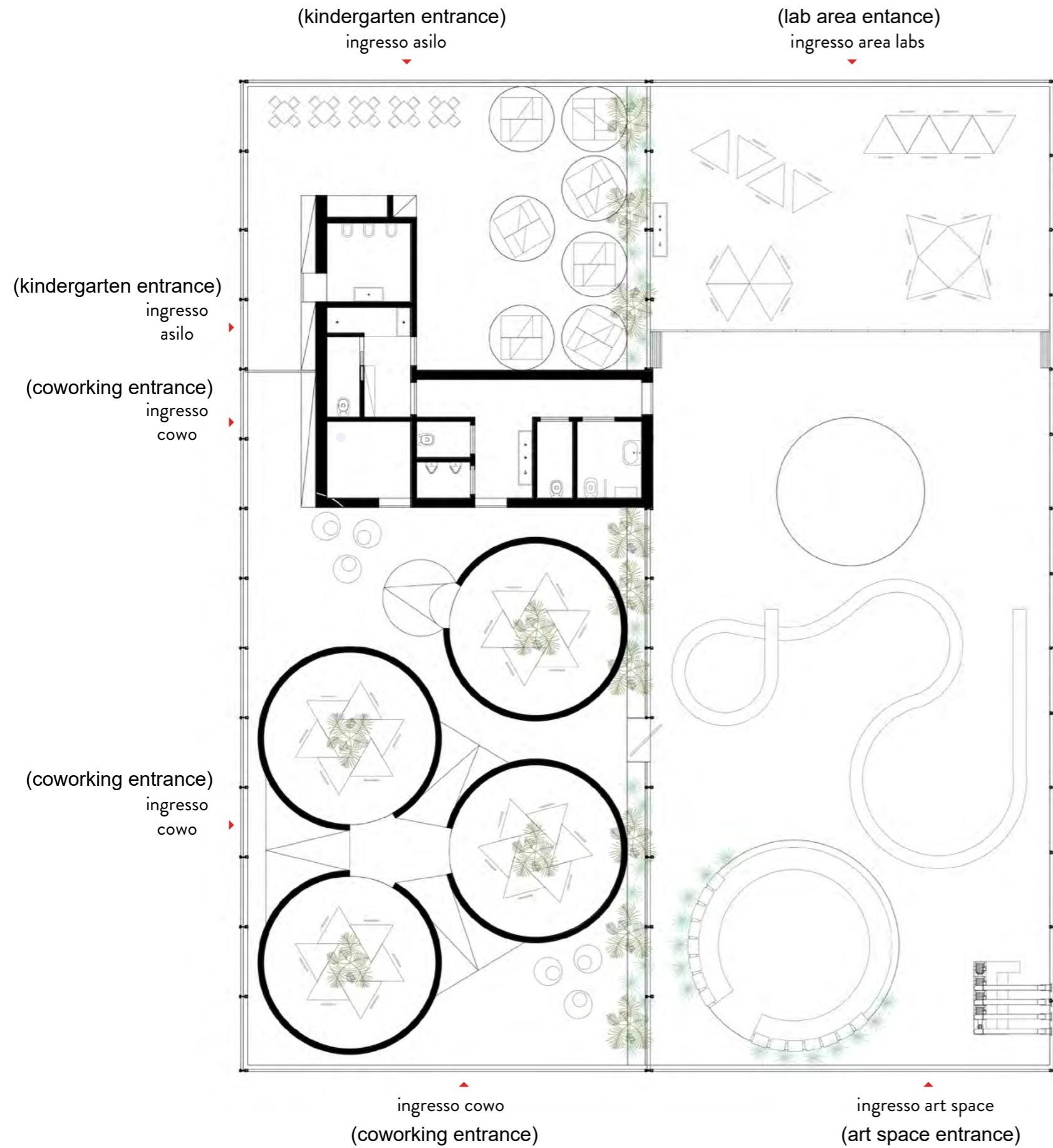
- semenzai (seedbeds)
- residenze per artisti (residencies for artists)
- serre acquaponica (aquaponics)
- pavimentazione idrodrain (hydrodrain paving)



ciclo dell'acquaponica
(aquaponic cycle)



serra madre



(nord greenhouse)

serra nord

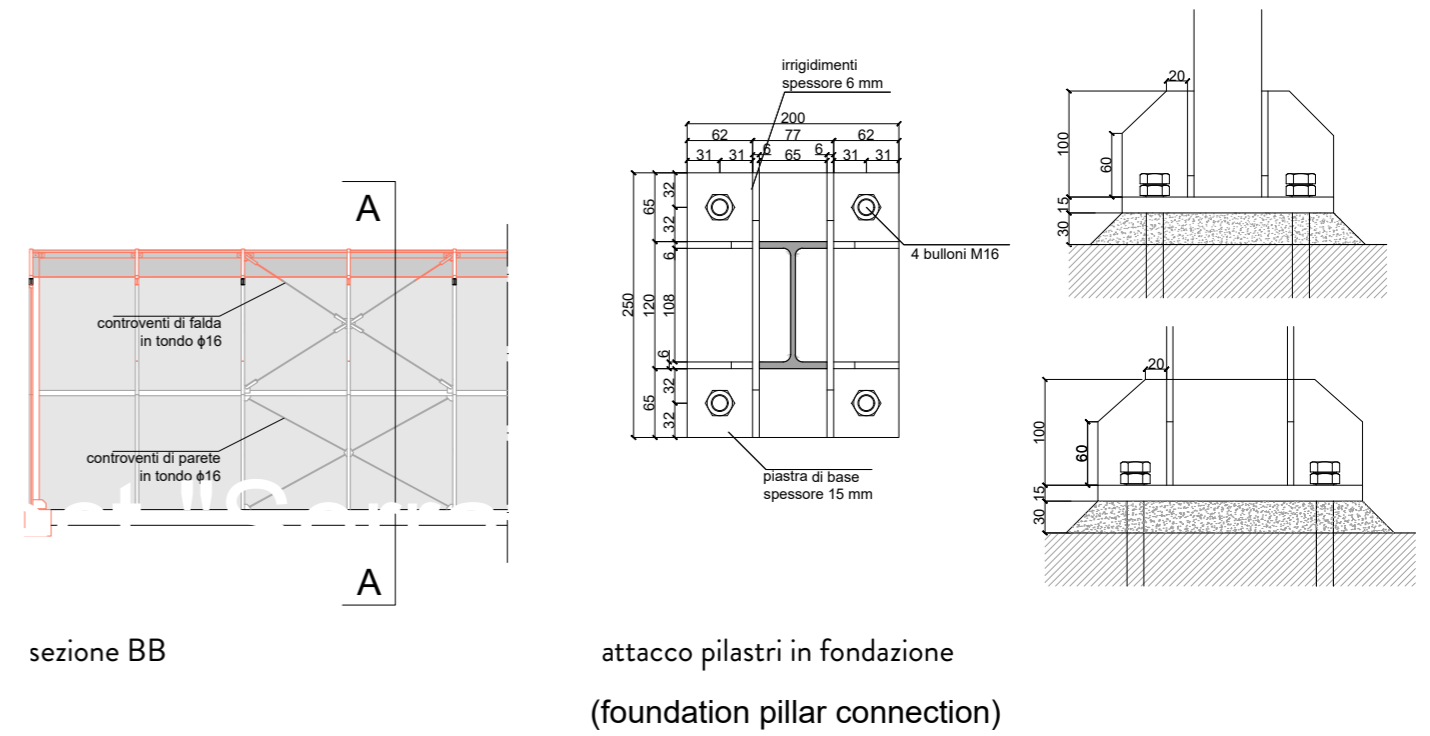
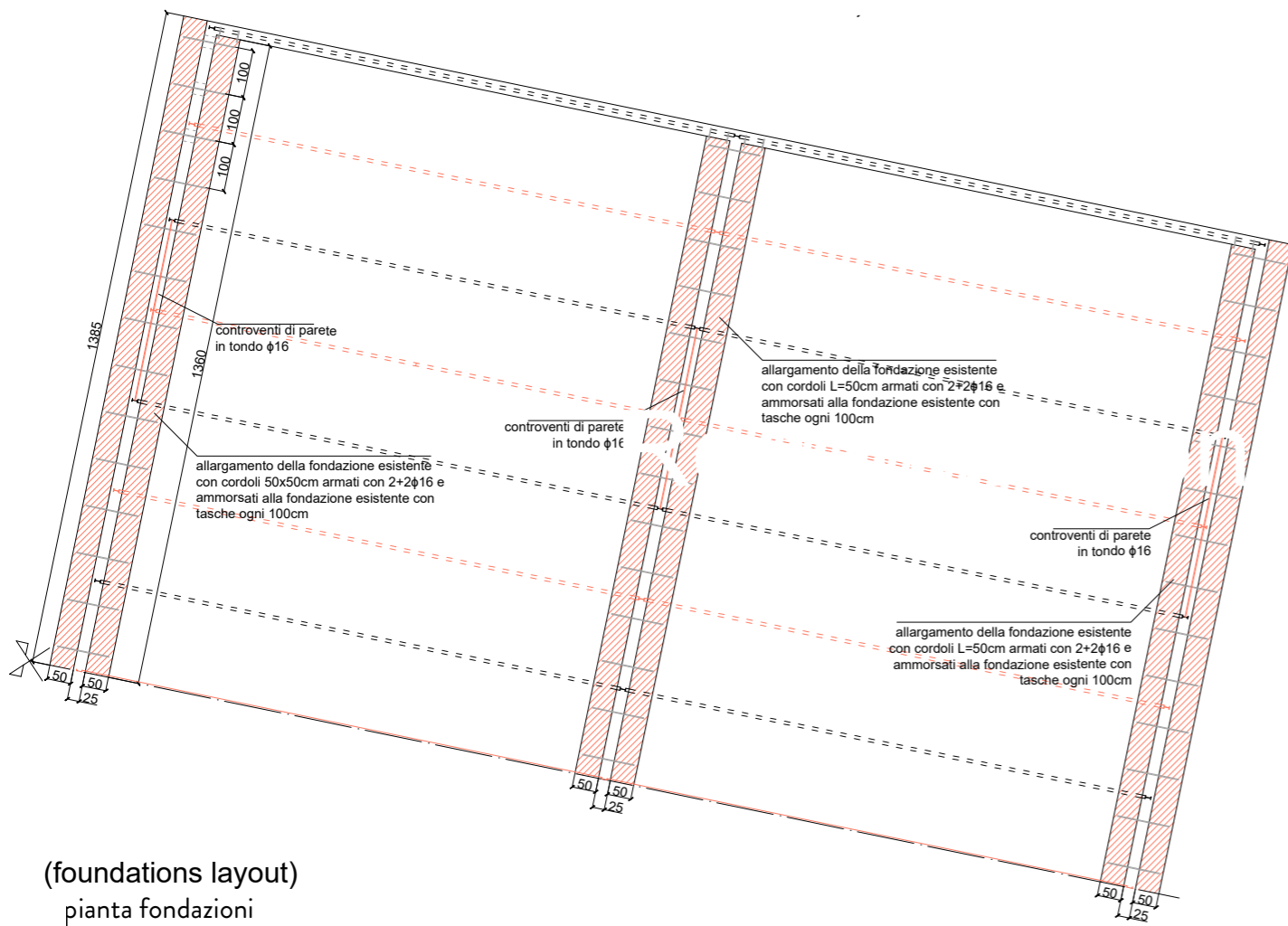
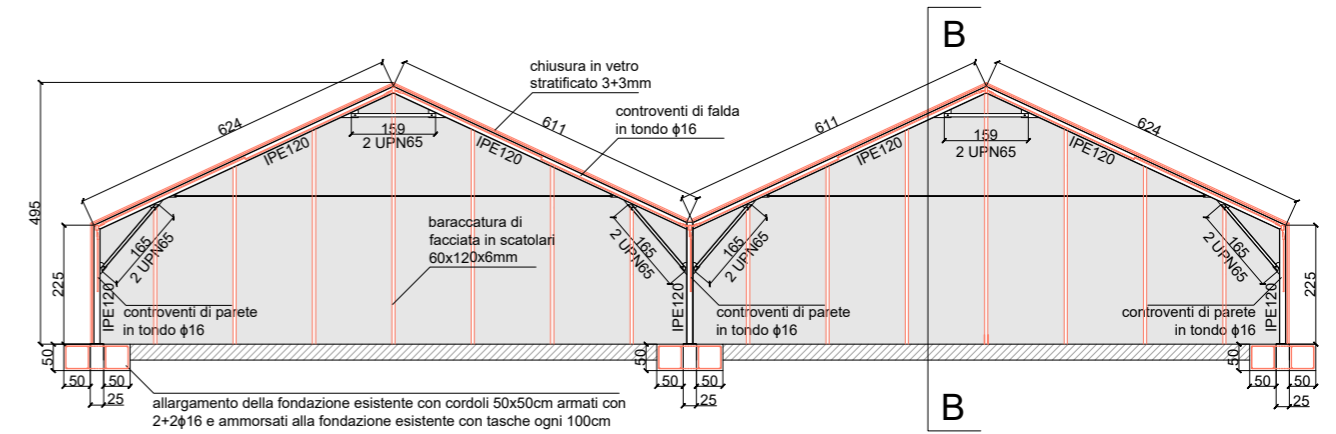
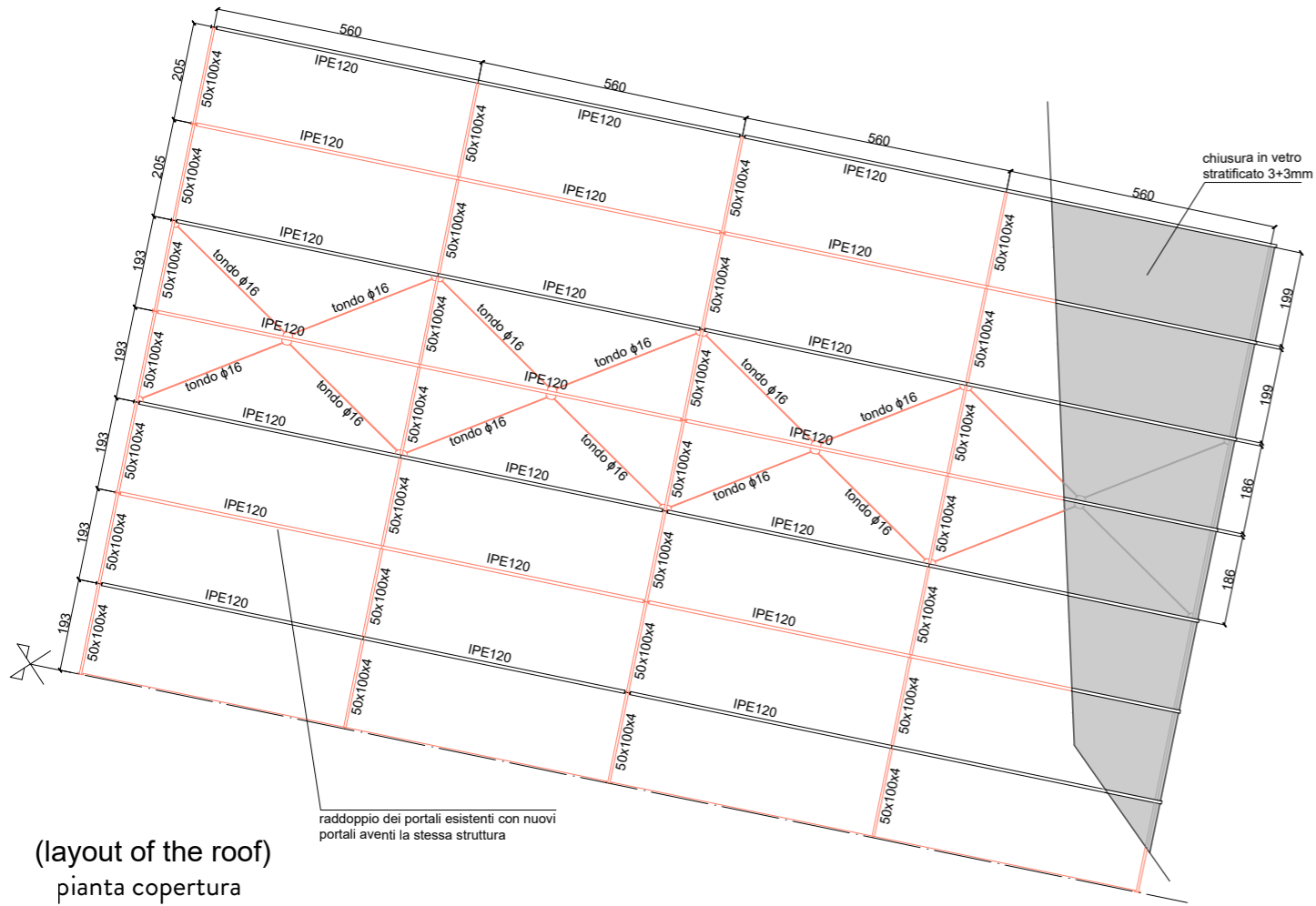
- cowo_168.67mq
- asilo - area gioco_35.55mq
- asilo - area teepee_33.17mq
- wc bimbi_5.09mq
- wc personale_7.08mq
- wc pubblico_20.48mq
- deposito_4.96mq

(south greenhouse)

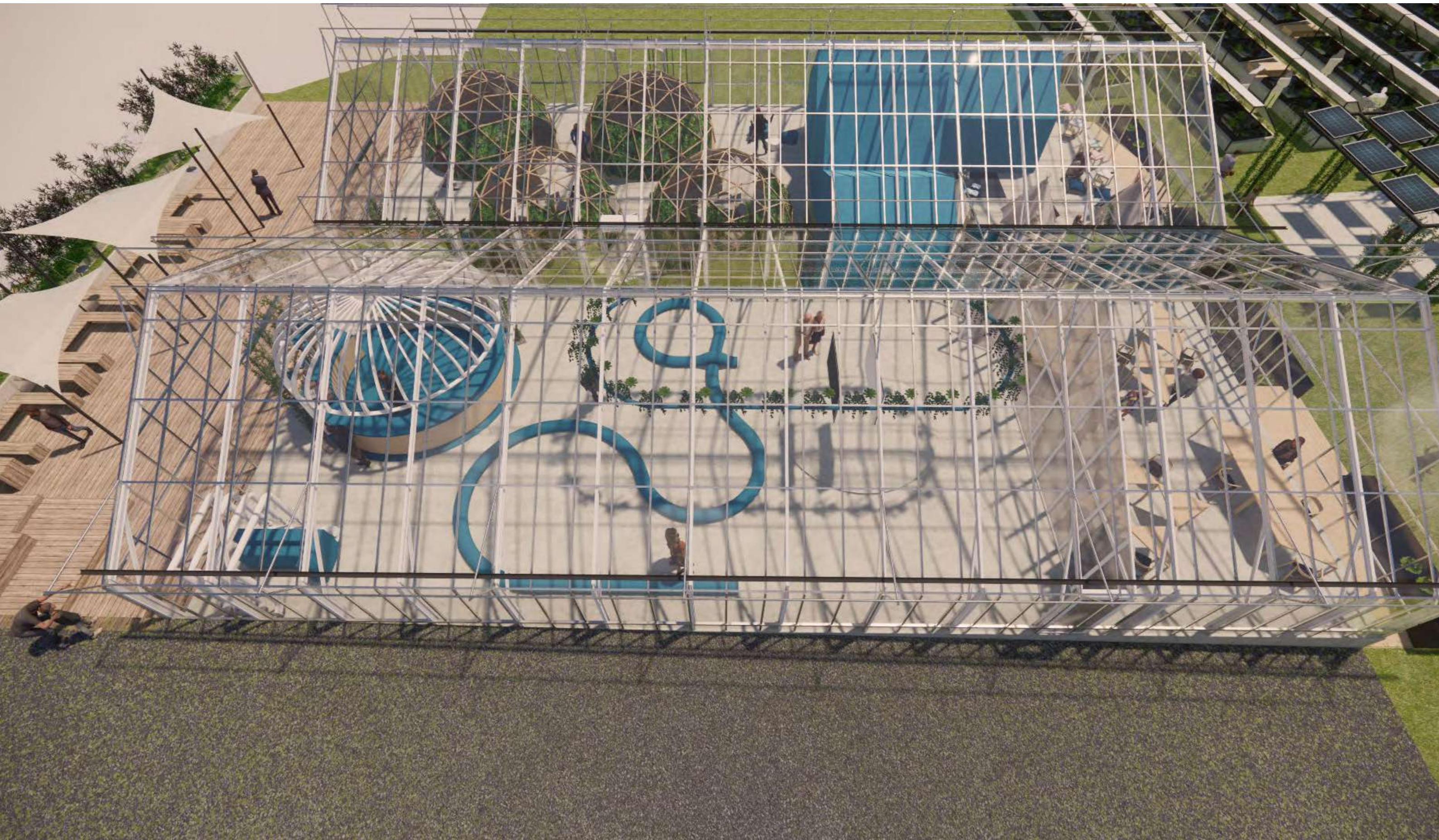
serra sud

- art space_223.18mq
- bar_26.57mq
- palco_13.20mq
- area labs_74.01mq

progetto di adeguamento strutturale
(structural adjustment project)

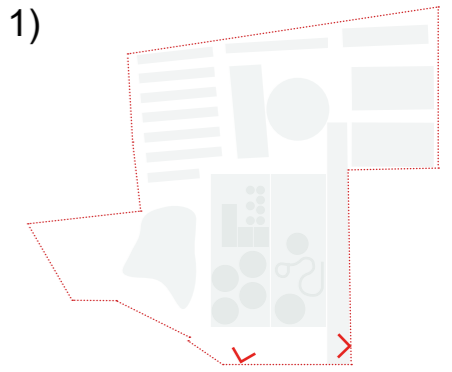


sezione BB



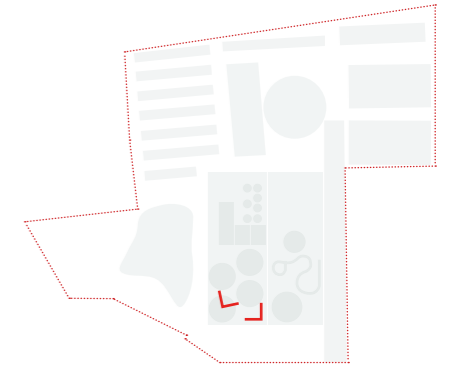


foyer esterno 1
(external foyer 1)



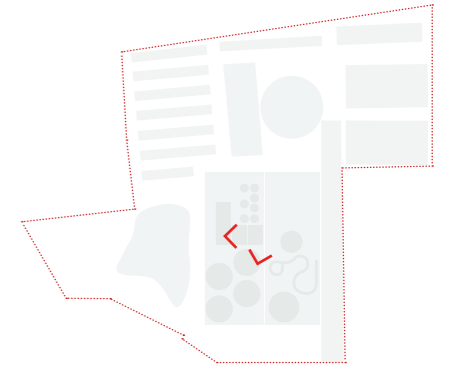


COWO



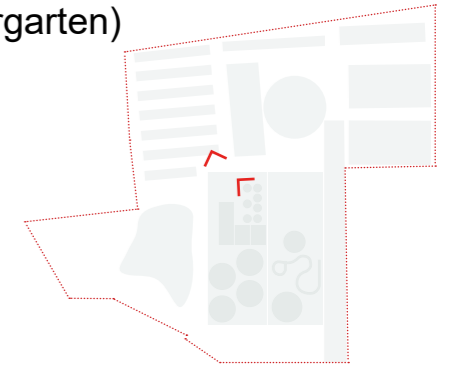


COWO



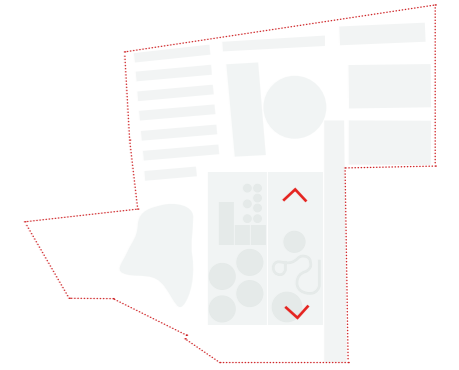


foyer esterno 2 e asilo
(external foyer 2 and kindergarten)



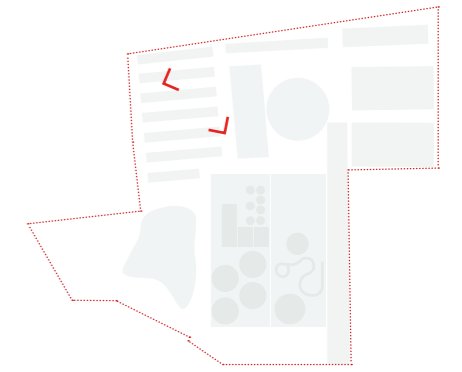


art space e bar



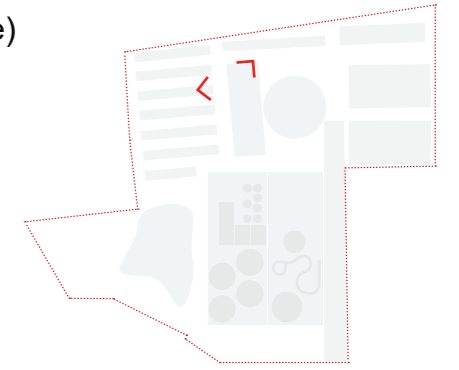


semenzai
(seedbeds)



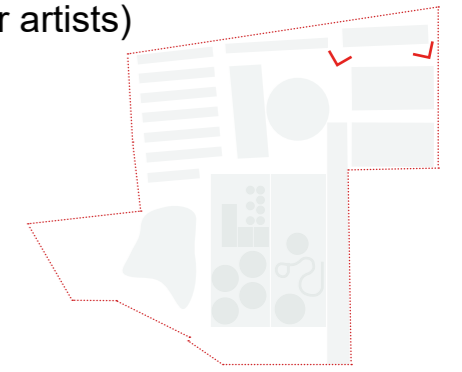


serra solare
(solar greenhouse)



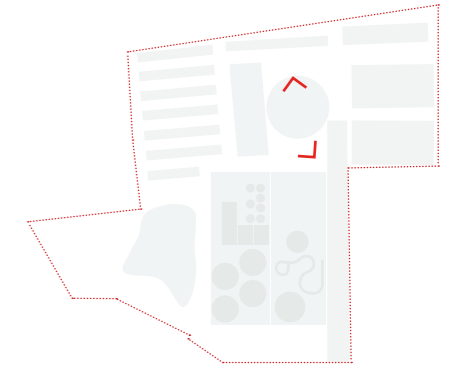


residenza per artisti
(residences for artists)





biolago
(biolake)



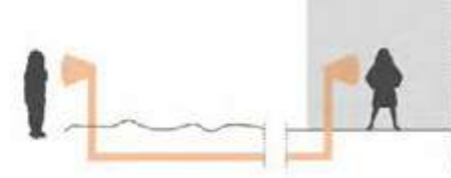
PARETE ATTREZZATA E CUCINA



TUNNEL FATTO IN SALICE



TELEFONO SENZA FILI



RECINTO E FIORIERE



SABBIERA



TEPEE



COLLINETTA



GIOCO D'ACQUA NEBULIZZATA



GIOCO LIBERO



playground

